

NEIGHBORLY CHAT

FOUR SEASONS NEIGHBORHOOD ASSOCIATION NEWS

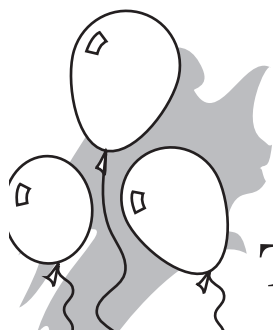
www.fourseasonslouisville.com

Spring 2016 Issue 2



**Saturday, June 4
8 a.m. – 1 p.m.**

The Four Seasons Board Members would like to invite all Four Seasons neighbors to participate in our Neighborhood Yard Sale. **To participate, just tie yellow balloons to your mailbox, display your treasures and sell, sell, sell!**



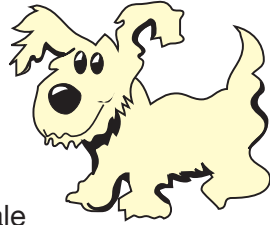
Thank You to our Yard Sale Sponsor!

David Lynch, Realtor, Broker, MBA
Semonin Realtors
600 N. Hurstbourne Pwy., Suite 200
Louisville, KY 40222
502-420-4960
dlynch@semonin.com

Cell phone: 417-3888
Twitter: @davidolynch
Facebook: david lynch-commercial
You tube: david lynch real estate
Website: davidlynch.semonin.com
Mobile site: semoni.mobi/davidlynch

Did you know?

SIGNS - Four Seasons has installed No Dumping and Pick Up After Your Pets signs on the railroad side of Raintree Drive. Please heed!



YARD SALE - The annual yard sale will be **June 4th**. Information is on the reverse side of this newsletter. Our faithful supporter and Four Seasons' resident, David Lynch with Semonin Realtors, is sponsoring this year's event. Signs will be posted and an ad will be in the Courier Journal. *THANK YOU DAVID FOR YOUR SUPPORT.*

WASTE MANAGEMENT - Our neighborhood weekly trash rate is \$12.24 per month, weekly recycling is \$5.35 and weekly yard waste is \$5.35 per month. There is no charge for cans. The monthly rate is not increasing and the rates are in effect through June 30, 2021. If you use another waste removal company, consider switching to Waste Management and receive these special rates. But only if you are a Four Seasons' Neighborhood Association member.

NEXTDOOR.COM - *Want to register? Go to NEXTDOOR.COM, type in "Four Seasons". You will be able to get neighborhood notifications, post appropriate content and see items for block watch. Our own website is FOURSEASONS.LOUISVILLE.COM. Please register there too.*

FSNA MEETINGS - Our meetings are being moved to Tuesdays instead of Thursdays. The schedule for the rest of the year is Tuesday, August 16 and Tuesday, November 15. Please mark your calendar!!

Four Seasons Neighborhood Meeting

Tues., August 16 • 7 – 8 p.m.
Tues., November 15 • 7 – 8 p.m.

Hunsinger Ln. Baptist Church
3400 Summerfield Drive

Please bring nonperishable food items

MARKETING & ADVERTISING SPECIALIST • GRAPHIC DESIGN



468.7544

creative2squared.com

facebook.com/creative2squared

Call Joni for your social media marketing.

FACEBOOK PAGE - Our neighborhood has gone social!! Join the *Four Seasons Neighborhood Association* page. Share your backyard pictures, wildlife you see in the neighborhood, your family picture or anything funny.



WE HAVE 288 PAID MEMBERS



Thank you to the neighbors that have paid their dues. If you have not already done so, please send your \$35 dues as soon as possible. We need your support. We will be sending reminder letters soon. Mail your dues to FSNA, **3410 Rainview Circle**. Save us the time and expense of sending you a past due letter.

STREETLIGHTS IN FOUR SEASONS - We are currently paying for 36 streetlights and are contemplating adding more if the budget permits. We need seven residents' dues to pay for one streetlight. Your dues help pay for streetlights plus so much more.

Want a mailbox that adds character to your home?

Pinterest has many brick mail box plans, but these plans for a Gray Cast Stone Mailbox Post from Lowe's is both beautiful and easy to construct.

Here are the steps:

1. Dig a new hole in the ground 18 inches deep and insert a 4x4 post in the hole.
2. Fill the hole with QuickCrete, pour water on top of the QuickCrete and let it sit for an hour to harden.
3. Make sure it is level before you let it harden.
4. Slide the cast stone post over the wood post.
5. The front of the cast stone post will lay flat against the front of the 4x4 post. This way, when you screw in the mailbox holder and mailbox to the front of the cast stone post, it will join the two together making the post sturdy.
6. Check again and make sure it is level.
7. Add the cap stone on top with an epoxy.
8. Drill holes in the cast stone post where you would like your mailbox holder to go. Then screw the mailbox holder to the post using the screws provided in the box. You're done.

For the Pinterest plans, type the URL address in your browser bar, <http://bit.ly/SktSru>

